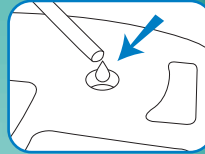


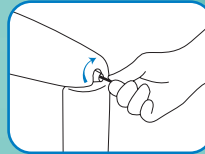
Ziva



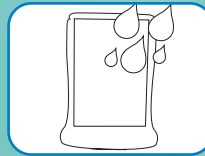
Easy to position



Water filled base



Lockable



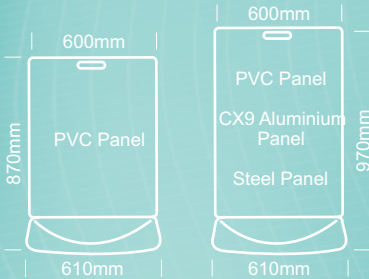
Weatherproof



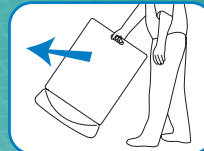
Ziva



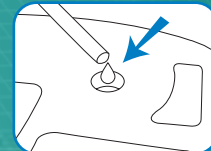
Ultron



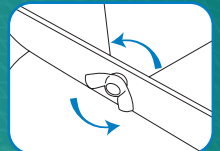
Ultron



Easy to position



Water filled base



Panel secured with wingscrew



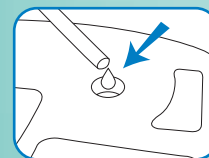
“the Ultron wheel option makes moving the sign really easy – even when fully weighted”

Base Colour Guide



Check below for base colours available.
Colours are indicative only.

informer



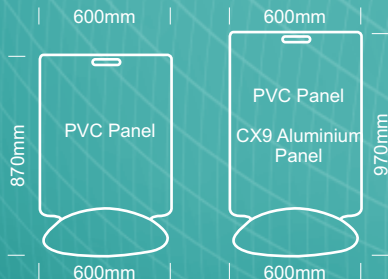
Water filled base



Panel secured with tab



informer



PAVEMENT SIGNS

Ziva

a completely new message in under a minute

- Displays 2 x A1 posters or digital prints
- Posters can be changed out easily - no tools required
- Unit locks to protect posters
- 100% weatherproof
- Comes with wheels for easy positioning
- Mould-in base logos available - minimum quantities apply
- Stock base colours - White Haze, Graphite, Red, Orange, Yellow, Dark Blue

Ultron

the ultimate pavement sign

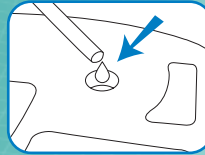
- Wheel option available for easy positioning
- Panel locks into place with stainless steel wingscrew
- Panels can be easily interchanged
- Available with 800mm and 900mm PVC panels
- Also available with 900mm CX9 powdercoated aluminium panels in White, Black, Yellow, Tomato Red, Dark Blue, Metallic Silver
- Steel panels also available for magnetic signage. Powdercoated Black or White
- Water fillable base gives up to 17kg weight for maximum stability
- Smaller footprint than other bases available - less pavement obstruction
- Mould-in base logos available - minimum quantities apply
- Stock base colours - Black, White, White Haze, Graphite, Red, Orange, Yellow, Dark Green, Lime Green, Dark Blue, Light Blue, Purple

informer

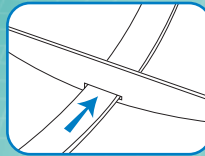
Dome-shaped water fillable base

- Panel locks into place with PVC tab
- Panels can be easily interchanged
- Available with 800mm and 900mm PVC panels
- Also available with 900mm CX9 powdercoated aluminium panels in White, Black, Yellow, Dark Blue, Metallic Silver
- Water fillable base
- Stock base colours - Black, White, Red, Orange, Yellow, Dark Green, Light Green, Royal Blue, Light Blue, Magenta

eXeCUtive



Water filled base



Panel secured with tab

eXeCUtive

Classic shape water fillable base

- Panel locks into place with PVC tab
- Panels can be easily interchanged
- Available with 800mm and 900mm PVC panels
- Water fillable base
- Stock base colours - Black, White, Yellow, Orange, Royal Blue, Light Blue, Dark Green, Light Green, Magenta

Dire Ctor

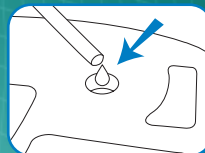
- Friction-fit panel design
- Panels can be interchanged
- Water fillable base
- Stock base colours - Black, White

messenger

the lightweight yet stable alternative

- Unique base design gives good stability
- Panels can be interchanged
- Easily portable
- Three sizes available - 600mm x 800mm, 500mm x 600mm, and 400mm x 500mm

Dire Ctor



Water filled base

orBis sPinning sign

add movement to your message

- Water weightable base for super stability
- Base includes wheels, making it easy to position
- Available with optional top display panel
- Long life construction - stainless steel fastenings, plated and powdercoated frame and PVC panels
- Stock base colour - Graphite

For detailed panel dimensions refer to Page 31

Base Colo Ur gUiDe



Black



White



Yellow



Orange



Dark Green



Light Green



Royal Blue



Light Blue



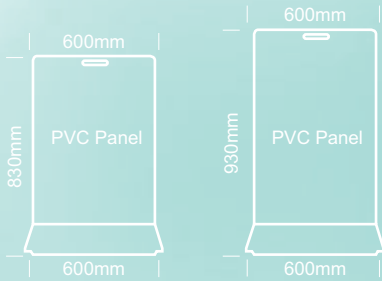
Magenta



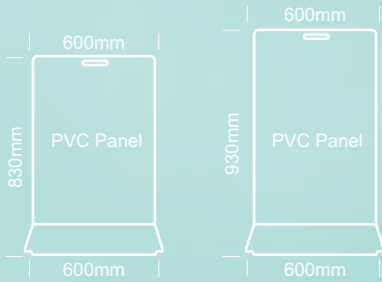
Graphite

Check product descriptions for base colours available. Colours are indicative only.

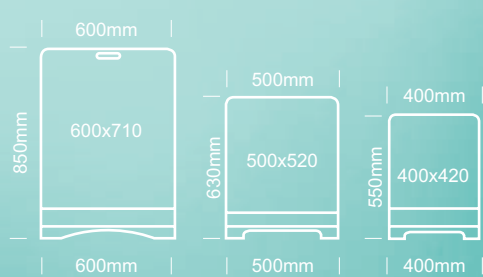
eXeCUtive



Dire Ctor



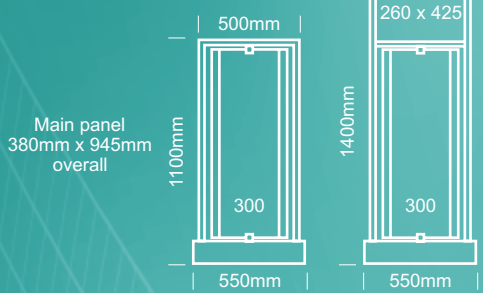
messenger



messenger



orBis sPinning sign



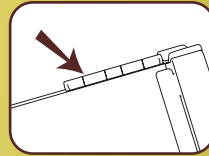
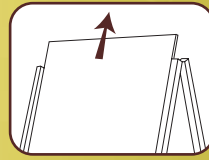
orBis sPinning sign

orBis sPinning sign available with or without static PVC Panel



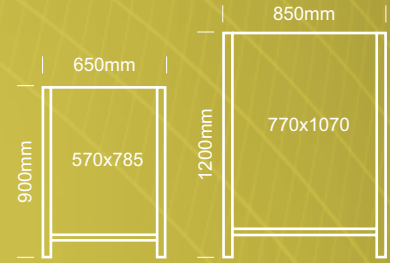
“adding movement to our message has helped differentiate our stores and created more awareness”

aDvertiser

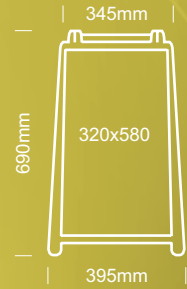


Non-rust hinges

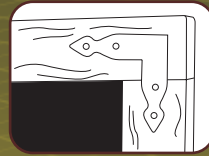
aDvertiser



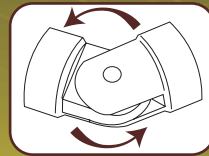
JUmBo safety Boar D



Pioneer

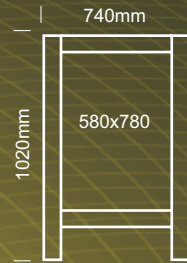


Rustic finish

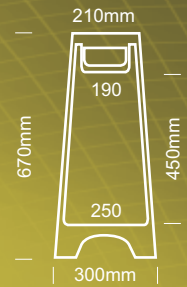


Non-rust pivot hinges

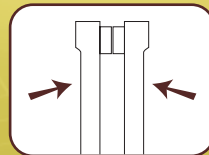
Pioneer



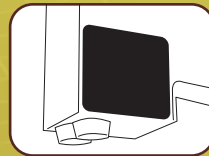
safety a-Boar D



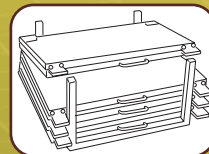
enDUrosign



Panels fold face to face, yet never touch. No scratching possible

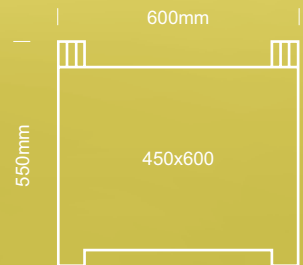


Feet weighted for stability

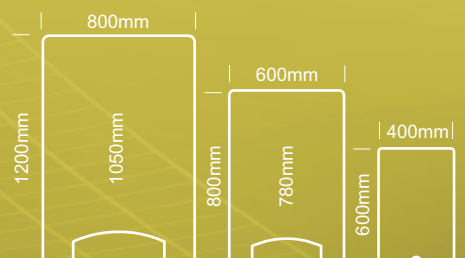


Stores fat in specially designed car boot rack. Holds 5 signs

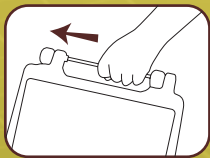
enDUrosign



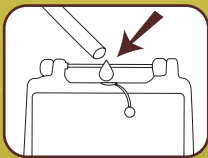
fiUte a-Boar D



JUmBo safety Boar D



Easily portable



Water weightable

flUte a-Boar D

“ideal for safety, directional or promotional messages”



A - B O A R D S

aDvertiser

strong durable a-Boards

- Panels easily interchanged or reversed
- Stainless steel components
- Durable powdercoated finish
- 2 sizes available - 600 x 900mm and 800 x 1200mm
- Panel colours - Black, White
Frame colour - Silver

Pioneer

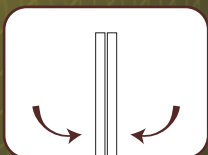
natural, rustic timber a-Board

- Available with White, Black or Chalkboard panels
- Panels can be interchanged
- Non rust hinges and components
- Oiled to preserve the natural timber look

safety a-Boar D



Easily portable



Folds flat

enDUrosign

the toughest a-Board available

- Guaranteed tougher - will not rot, dent, warp or crack
- Moulded from Engineering Grade Plastics
- Easily portable
- Weighted, non slip feet for stability
- Panels fold face to face protecting the graphics. No scratching possible
- Car boot rack available to hold up to five signs
- Stock colours - Black, White, Safety Yellow

JUmBo safety Boar D

stable and durable safety message board

- Moulded in UV resistant PVC
- Suitable for interior or exterior use
- Folds flat for easy storage
- Holds up to 12 kgs for super stability
- Stock colour - Grey

safety a- Boar D

ideal for safety, warning or promotional messages

- Moulded in UV resistant PVC
- Suitable for interior or exterior use
- Folds flat for easy storage
- Stock colour - Safety Yellow

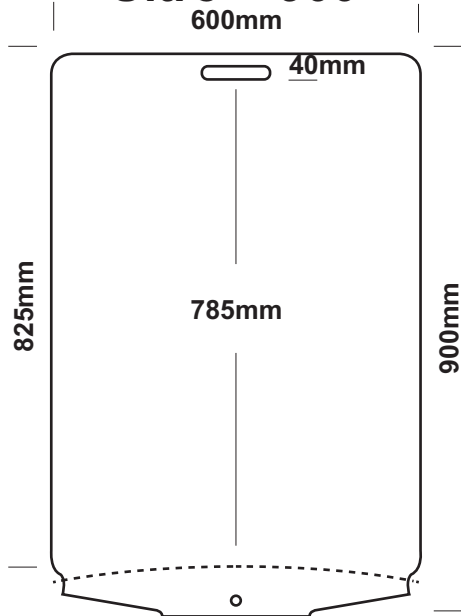
flUte a-Boar D

Uv stabilised 6mm fute board construction

- Strong yet lightweight
- Folds flat for transport and storage
- 3 sizes available - 400 x 600mm, 600 x 900mm and 800 x 1200mm
- Stock colour - White

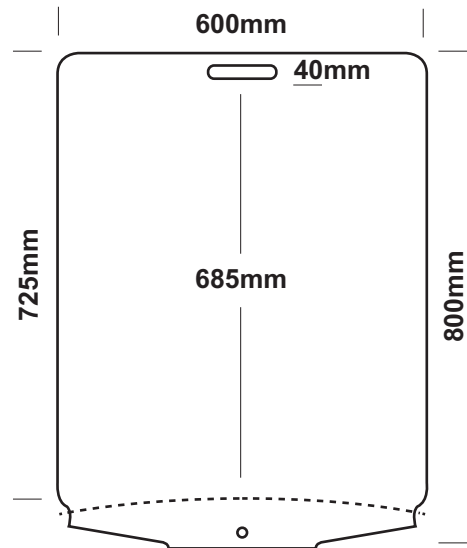
PAVEMENT SIGN PANEL SIZES

Ultero 900



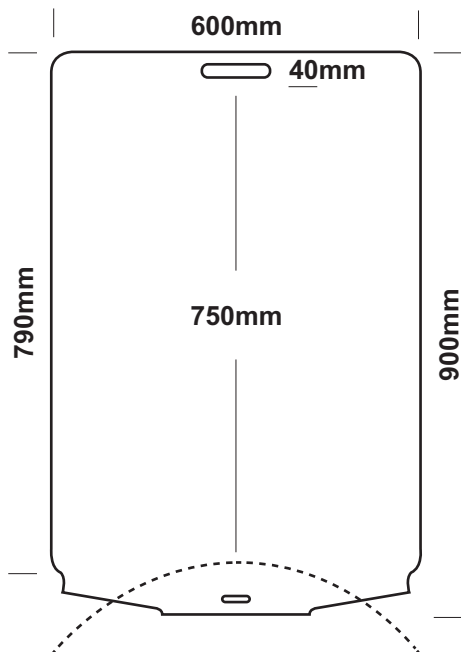
- CX9 powdercoated aluminium panels available in white, Black, yellow, Dark Blue, tomato red and metallic silver
- steel powdercoated panels available in white and Black
- PvC panels

Ultero 800



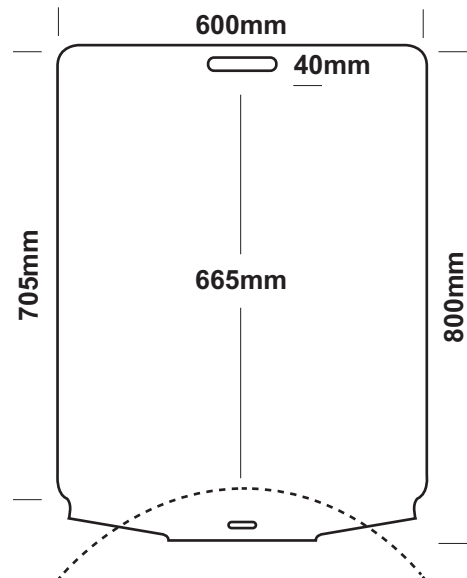
- PvC Panels

informer 900



- CX9 powdercoated aluminium panels available in white, Black, yellow, Dark Blue and metallic silver
- PvC panels

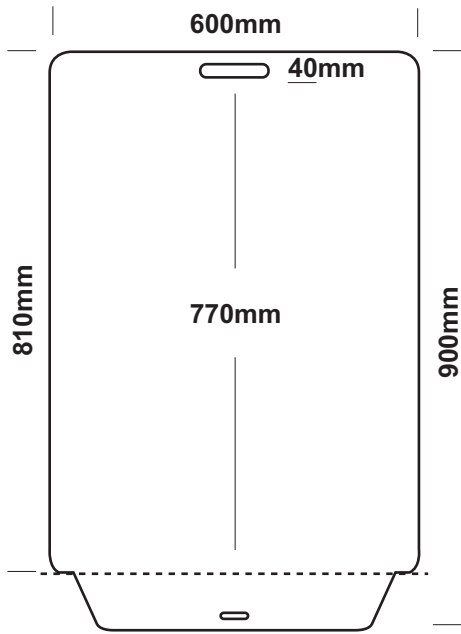
informer 800



- PvC Panels

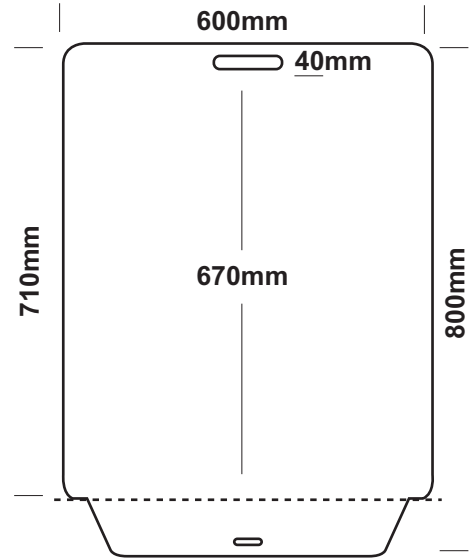
PAVEMENT SIGN PANEL SIZES

eXeCUtive 900



- PvC Panels

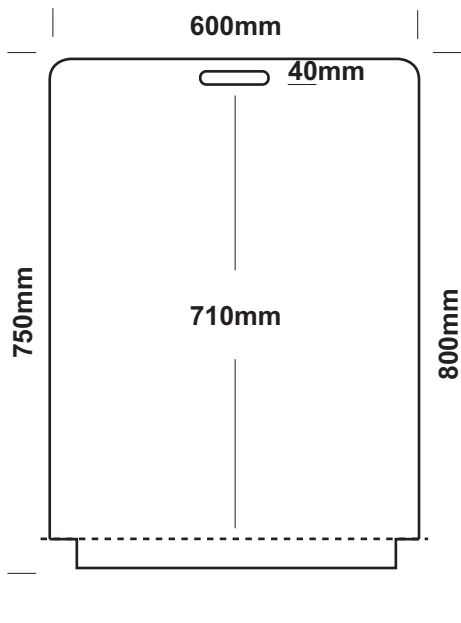
eXeCUtive 800



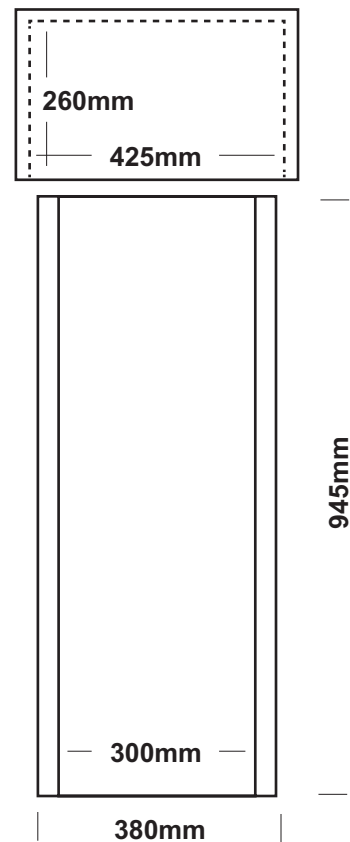
- PvC Panels

or Bis sPinning sign

Dire Ctor 800



- PvC Panels



- PvC Panels